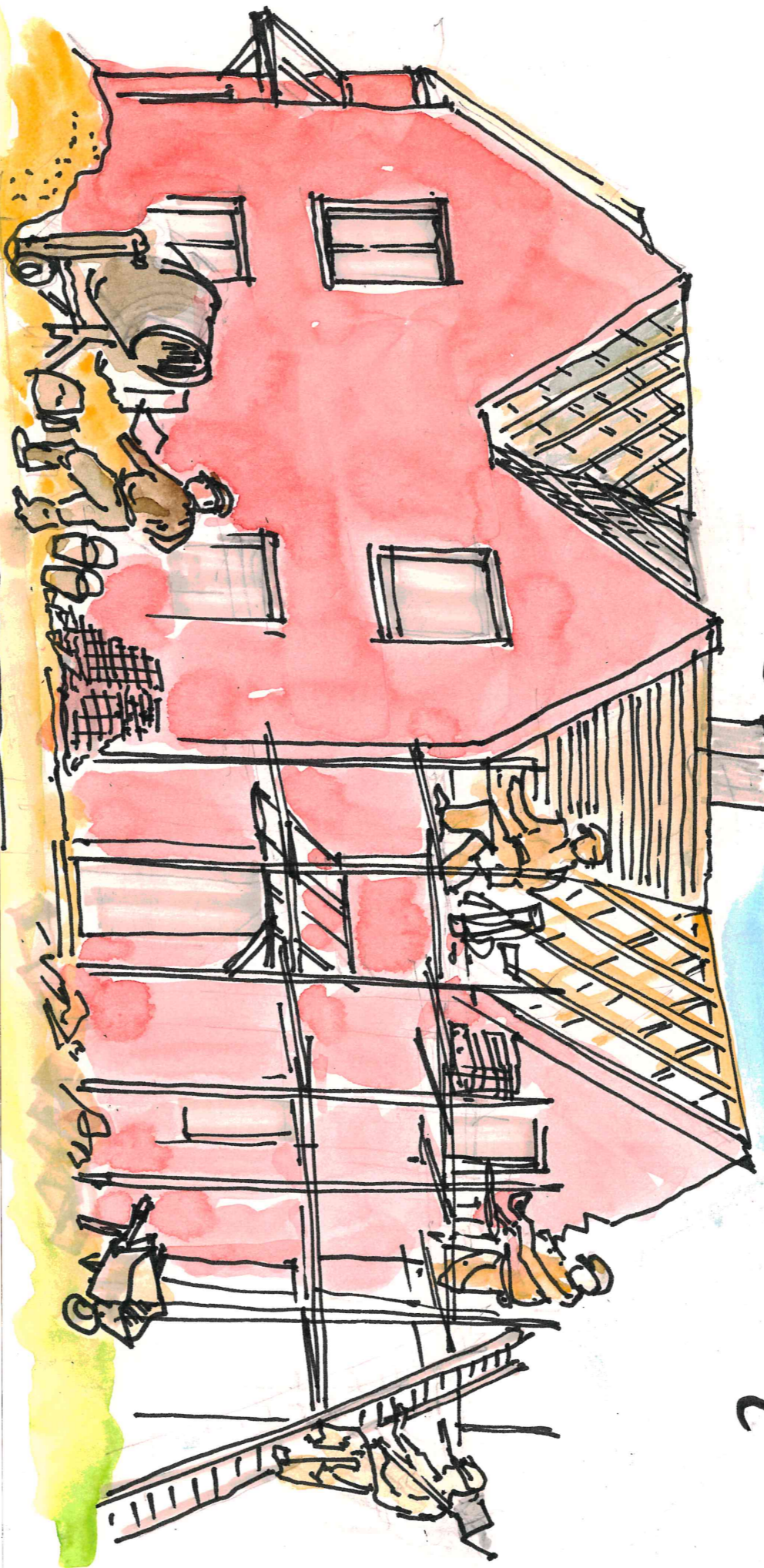


The Naisworth Society

Local Studies

Monday 28th April

An illustrated talk by **Chas Townley**



GLoucestershire Housing in Council Pre 1915

HEADLINES PROCLAIM A HOUSING CRISIS IN 2025

BUT THERE WAS A HOUSE SHORTAGE BEFORE THE 1ST WAR

IN 1921 THERE WERE 147,000 HOMES BUILT. IN 1932,

THE TIME OF OUR TYNINGS, 221,000 COMPLETD

A LARGE PROPORTION OF THESE WERE COUNCIL BUILT

CHAS TOWNLEY WILL DESCRIBE INITIATIVES

IN THE COUNTY BEFORE 1915 THAT LED THE WAY

7.30 THE SAWYER HALL £2. MEMBERS £5 NON MEMBER

+ Refreshments